

## Table of Contents

<b><i>Fuel sustem installing</i></b> .....	2
Ramp installing on Audi 100 atmo engines .....	2
Ramp installing on Audi 100/200 Turbo engines .....	5
Connecting a fuel filter with a pressure regulator .....	7
Installing a fuel filter with pressure regulator on Audi 100/200 .....	8
Installing a fuel filter with a pressure regulator on a Mercedes M102/103 .....	11
Installing a fuel filter with a pressure regulator on a Mercedes 123 M102 .....	11
Installing a fuel filter with a pressure regulator on a Mercedes M110 .....	12
Installing a fuel filter with a pressure regulator on a Mercedes M117 .....	14

## Fuel sustem installing

### Ramp installing on Audi 100 atmo engines

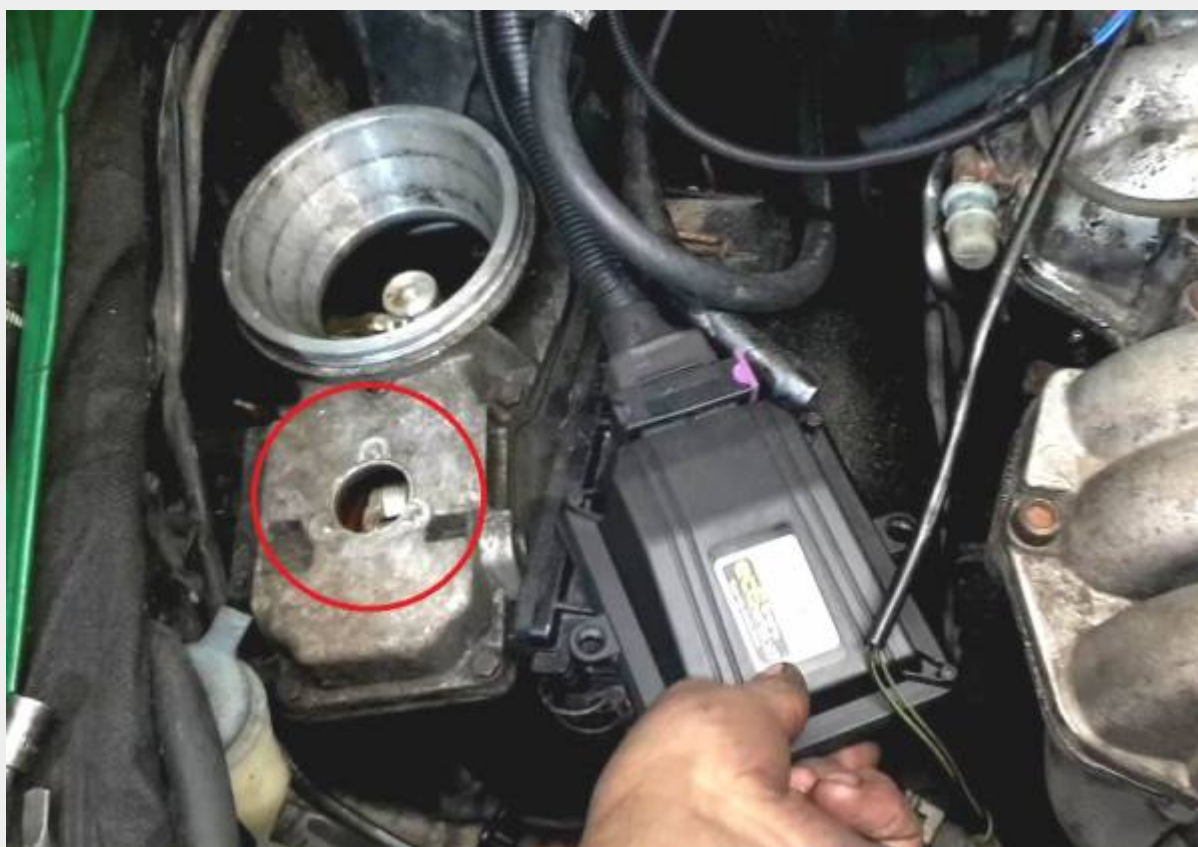
- Remove the throttle body and air ducts.
- Remove the air pressure disc (the round plate under the throttle body).
- Remove the plastic injector cooling pipe.
- Remove the dispenser-distributor (spider).
- Remove the Jetronics injectors and cups from the manifold.



- Plug the injector cooling air duct pipes on the cylinder head and on the intake manifold.
- If the starting injector mount interferes with the ramp, it must be cut off. Place the starting injector back onto the sealant.



- You can plug the hole from the dispenser by screwing a metal plate with sealant to this place.



- Install the injectors as far as it will go into the ramp without using any lubricant.
- Insert plastic cups into the injectors as deeply as possible.



- Insert the assembled ramp assembly into the injection wells of the manifold as deeply as possible. Before installation, you can lubricate the injector cups with silicone grease. Position of the ramp - fitting forward.
- The ramp and injectors must be installed coaxially without distortion. Otherwise, gasoline leaks may occur.
- Route the wiring and connect the connectors to the injectors.
- To fixing the ramp, bend the mounting plates and mark the mounting holes.
- Drill holes and fix the ramp.





## Ramp installing on Audi 100/200 Turbo engines

- Remove the throttle body and air ducts.
- Remove the air pressure disc (the round plate under the throttle body).
- Remove the plastic injector cooling pipe.
- Remove the dispenser-distributor (spider).
- Remove the Jetronics injectors and cups from the manifold.
- Plug the injector cooling air duct pipes on the cylinder head and on the intake manifold.

- If the starting injector mount interferes with the ramp, it must be cut off. Place the starting injector back onto the sealant.
- You can plug the hole from the dispenser by screwing a metal plate with sealant to this place.
- Install the injectors as far as it will go into the ramp without using any lubricant.
- Insert plastic cups into the injectors as deeply as possible.
- Insert the assembled ramp assembly into the injection wells of the manifold as deeply as possible. Before installation, you can lubricate the injector cups with silicone grease. Position of the ramp - fitting forward.
- The ramp and injectors must be installed coaxially without distortion. Otherwise, gasoline leaks may occur.
- Route the wiring and connect the connectors to the injectors.
- To fixing the ramp, bend the mounting plates and mark the mounting holes.
- Drill holes and fix the ramp.





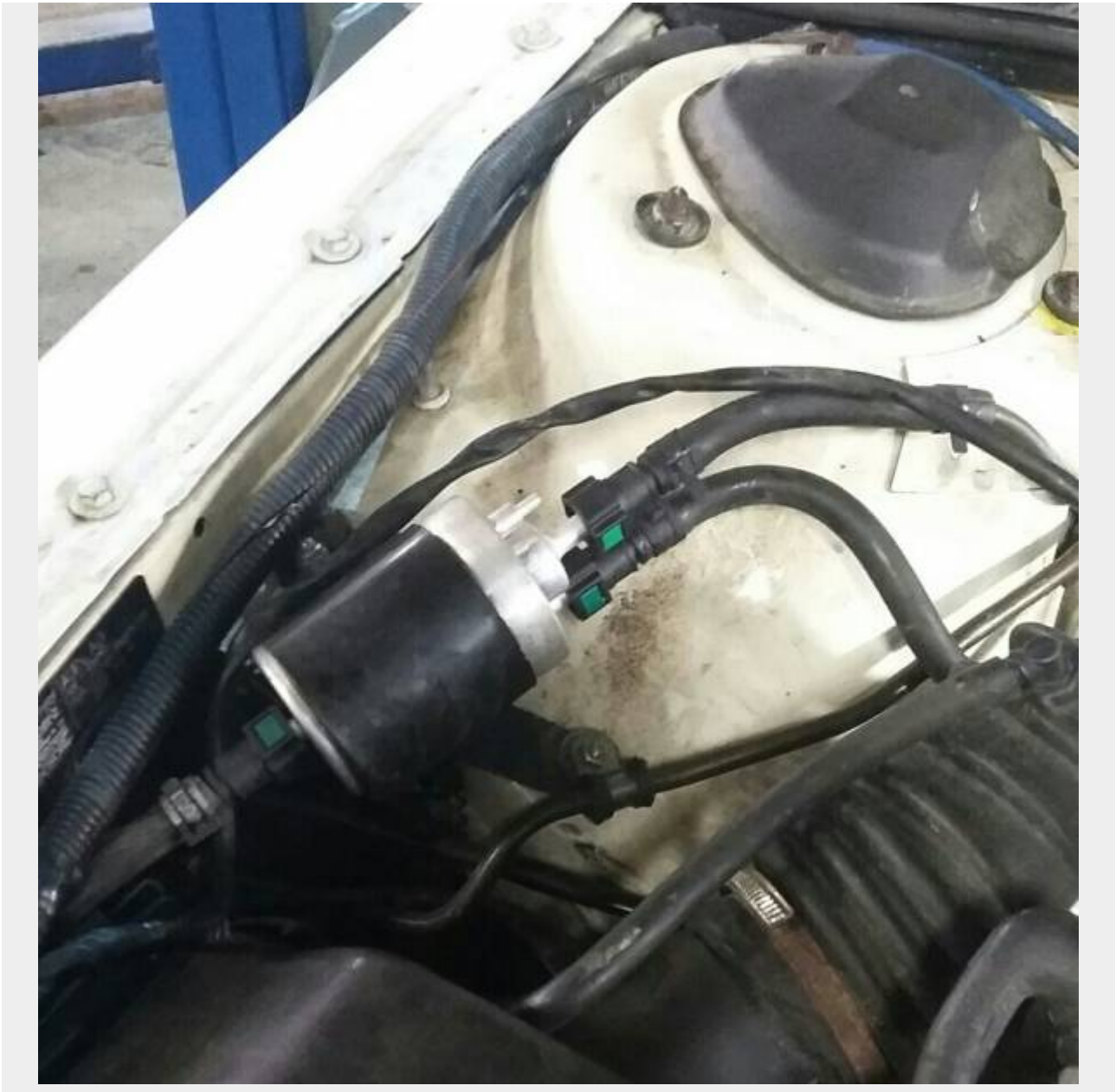
## Connecting a fuel filter with a pressure regulator



## Installing a fuel filter with pressure regulator on Audi 100/200

- Remove the stock fuel filter and install a new one from the kit, with a built-in pressure regulator.
- Cut the fuel hose from the kit into pieces of the required length.
- Insert into the hoses and secure the quick release filter fittings.
- Connect the filter to the ramp and to the fuel lines using the clamps provided.
- Secure the filter.









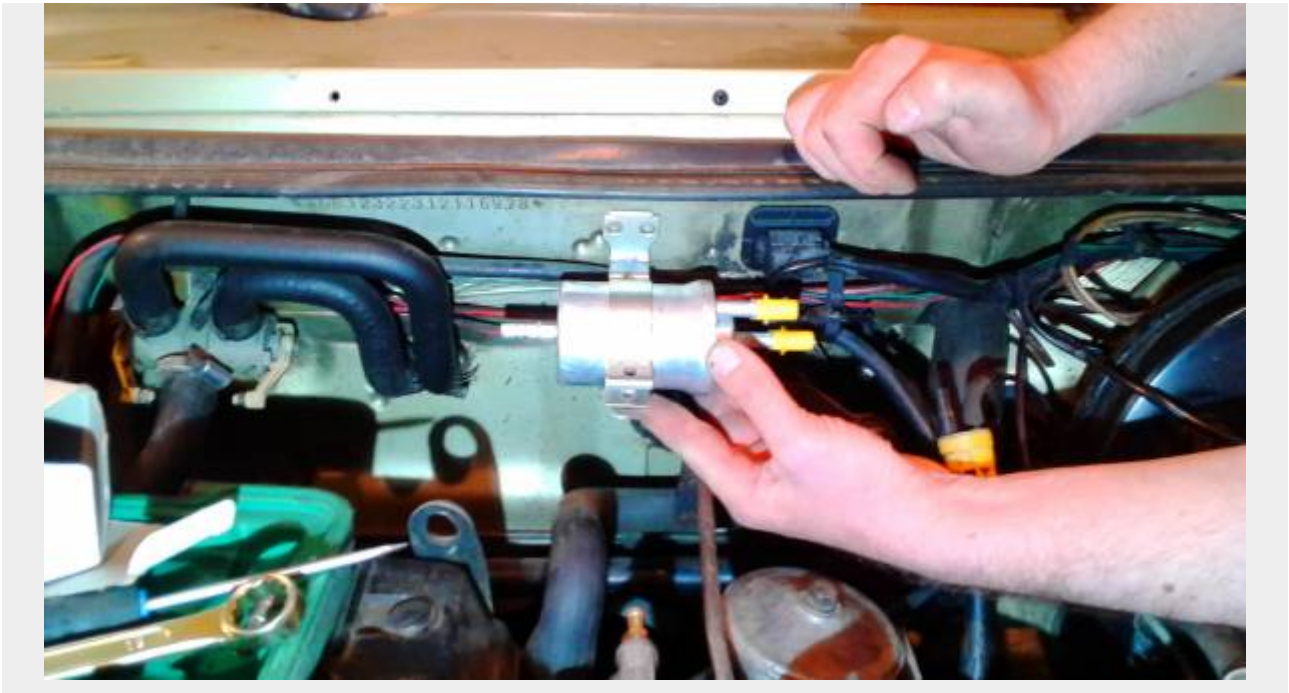
## Installing a fuel filter with a pressure regulator on a Mercedes M102/103

- Cut the fuel hose from the kit into pieces of the required length.
- Insert into the hoses and secure the quick release filter fittings.
- Connect the filter to the ramp and to the fuel lines using the clamps provided.
- Secure the filter.



## Installing a fuel filter with a pressure regulator on a Mercedes 123 M102

- Cut the fuel hose from the kit into pieces of the required length.
- Insert into the hoses and secure the quick release filter fittings.
- Connect the filter to the ramp and to the fuel lines using the clamps provided.
- Secure the filter.



### Installing a fuel filter with a pressure regulator on a Mercedes M110

- Cut the fuel hose from the kit into pieces of the required length.
- Insert into the hoses and secure the quick release filter fittings.
- Connect the filter to the ramp and to the fuel lines using the clamps provided.
- Secure the filter.





## Installing a fuel filter with a pressure regulator on a Mercedes M117

- Cut the fuel hose from the kit into pieces of the required length.
- Insert into the hoses and secure the quick release filter fittings.
- Connect the filter to the left and right head ramps through a tee and to the fuel lines using the clamps from the kit.
- Secure the filter.

